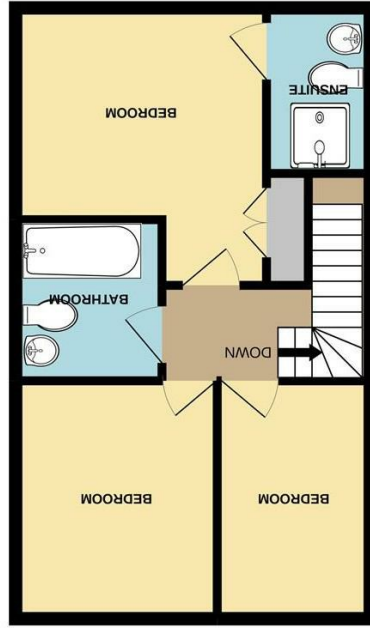
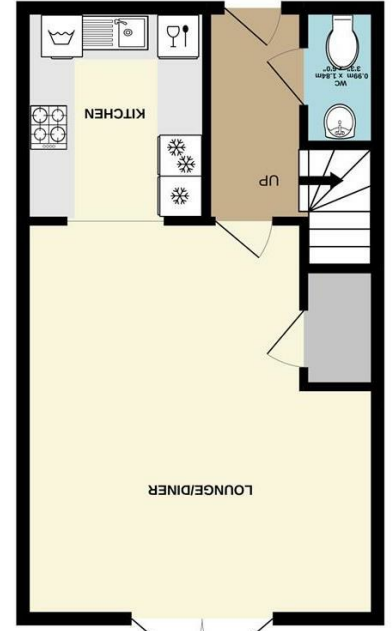


What every agent has been made to ensure the accuracy of the floorplan contained here, measurements of doors, windows, rooms and other features are approximate and responsibility is taken by the prospective purchaser. This service, systems and appliances shown here are not tested and no guarantee as to their operability or efficiency can be given.
 Made with floorplan 11/2021
 TOTAL FLOOR AREA: 77.8 sq.m. (837 sq.ft.) approx.



1ST FLOOR
 38.9 sq.m. (419 sq.ft.) approx.



GROUND FLOOR
 38.9 sq.m. (419 sq.ft.) approx.

Disclaimer - In accordance with the Property Misdescriptions Act, the company gives notice that all descriptions, references to condition, necessary permissions for use and other details are given in good faith and believed to be correct, but any intending lessees do not rely on them as statements of fact, but must satisfy themselves by inspection or other means, as to their accuracy.

| England & Wales | |
|---|----|
| EU Directive 2002/91/EC | |
| Not energy efficient - higher running costs | |
| (1-20) | G |
| (21-38) | F |
| (39-54) | E |
| (55-68) | D |
| (69-80) | C |
| (81-91) | B |
| (92 plus) | A |
| Very energy efficient - lower running costs | |
| Current | 84 |
| Potential | 84 |

Energy Efficiency Rating



Norfolk Property
 online.

Willowcroft Way | Norwich | NR4
Guide price £275,000

Norfolk Property Online are pleased to offer this beautifully presented family home situated on a popular modern development. The property offers 3 first floor bedrooms, en suite to master and family bathroom, whilst the ground floor includes a large lounge diner with garden access, plus stylish kitchen and WC. Outside benefits from a single driveway with garage and enclosed rear garden. This property is located in a prime position on the development within walking distance of the park.

Guide price £275,000-285,000

